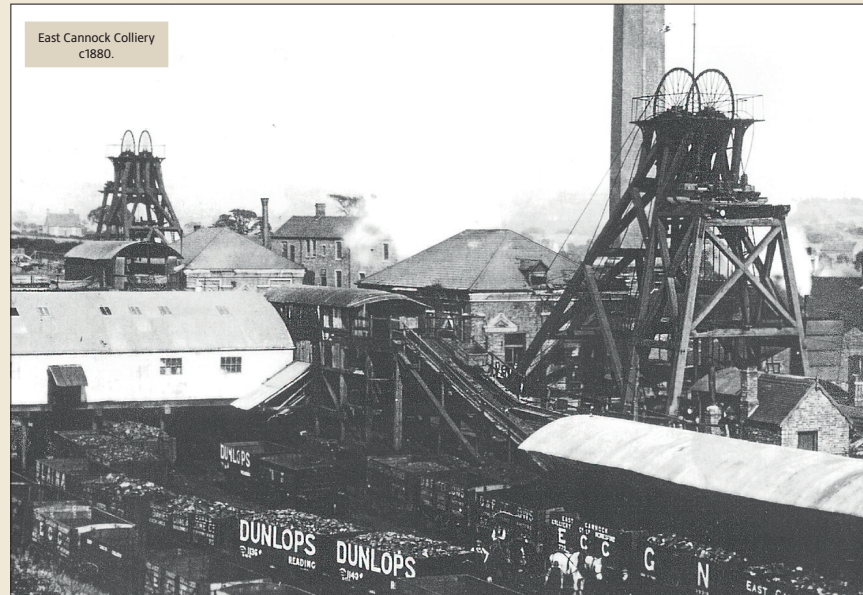


6. EAST CANNOCK ROAD

East Cannock COLLIERY

East Cannock Colliery was situated near the Globe Inn, in the area that now borders Stagborough Way.

Full production began in 1876, two years after the completion of two shafts. The ambitious plan to mine here at a cost of £120,000 had been made by a group of businessmen. The company chairman named one of the shafts Amy, after his daughter Amy Stokes.



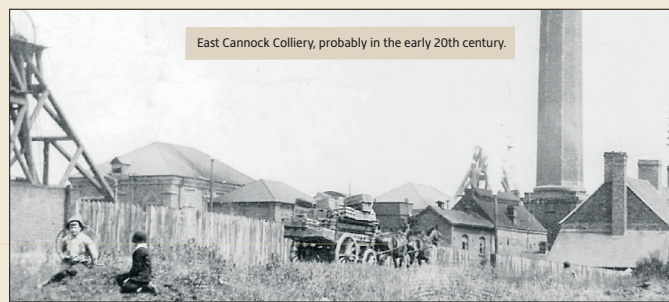
East Cannock Colliery c1880.

Tragedy struck the colliery in 1877 when an explosion of methane killed four boys and four horses and seriously injured two men.

For their injuries each workman received £10 10s, while the owner of one of the horses was awarded £15 15s.

By 1880 the business had failed and the company went into liquidation. It was sold for just £20,000, to Henry Davis Pochin, a Welsh businessman.

In 1947 the colliery was taken over by the National Coal Board, but ten years later it had closed due to lack of reserves. Surrounding collieries took the remaining coal and redeployed some of East Cannock Colliery's workers.



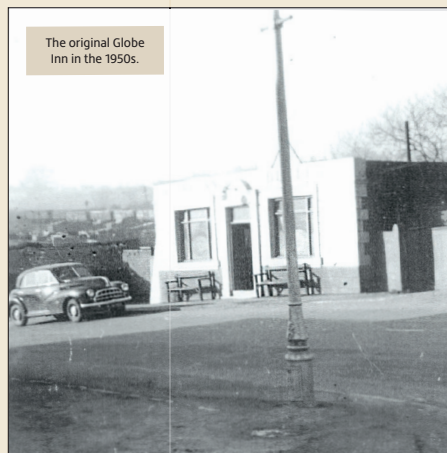
East Cannock Colliery, probably in the early 20th century.

The Globe Inn

As the coal mining industry grew in the 1800s the population of Hednesford swelled, and public houses began to cater for the workmen.

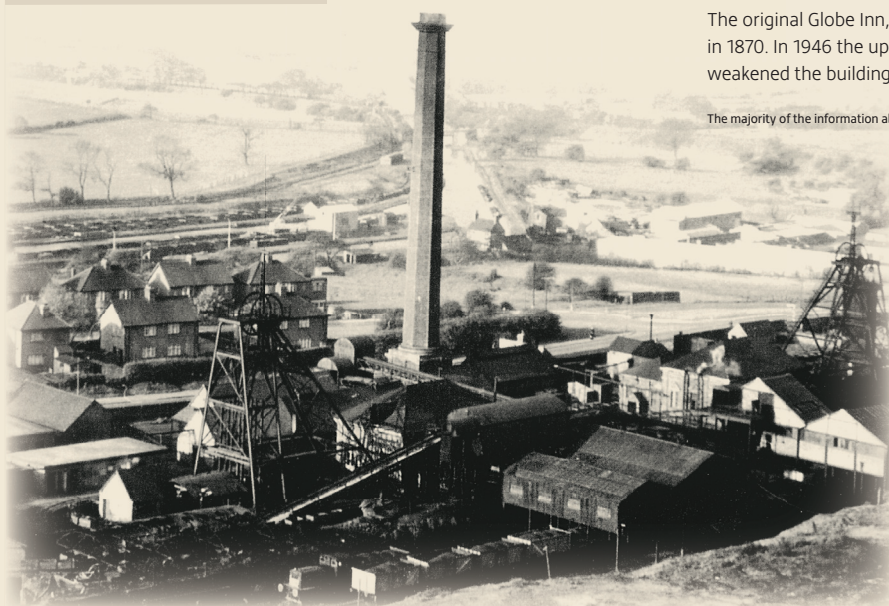
The original Globe Inn, which had two storeys, was established by Thomas Brindley in 1870. In 1946 the upper storey was removed when mining subsidence had weakened the building.

The majority of the information about the Globe Inn has been kindly provided by Anthony Hunt.



The original Globe Inn in the 1950s.

East Cannock Colliery c1950. The canal basin is shown in the background, to the right of the chimney.



EXPLORE AND DISCOVER

The Red House

Opposite the Globe Inn was the Red House. The building was originally a racing stables. In later years it became the home of a former music hall star.

The racing stables were run by a man named Lawrence Rooney. There were once at least six racing stables in the Hednesford area, but by the early 1900s the Red House was one of only three that remained.

The Williams family at the Red House

As a child in the 1890s, Erskine Williams became famous on the Victorian music hall scene as Little Erskine, the child 'lightning cartoonist' who toured the UK and around the globe.

In 1942 the Red House became the premises of the Artistic Poster Company, run by Erskine's brother Frank, who owned the Tivoli and Empire cinemas in Hednesford. Erskine became an artist for his brother, and lived at the house with his wife Violet and their two children.

“ Their daughter Daphne tells us how the Red House seemed to her as a child: I remember it as a rather creepy house - even in the summer the wind howled through the ill-fitting top floor windows. It was built over the local mine and the wall of our living room had a huge crack right across it that you could see through. ”



Erskine Williams (on the right). He is pictured with his pals at one of the military training camps on Cannock Chase, where he served during the Great War. In later life he resided for a while at the Red House.

CANNOCK CHASE HERITAGE TRAIL

Cannock Chase Heritage Trail is a 10-mile route linking the towns of Cannock, Hednesford and Rugeley. It passes through, or close to sites of historic or environmental interest, with interpretation boards along the way that tell the story of each location. Intended to support a healthy lifestyle, the trail is a facility for walkers and cyclists, offering walks and off-road cycle routes. The trail was initially funded by the Heritage Lottery Fund and several project partners in 2008.

The trail consists of mixed surfaces of tarmac, gravel and concrete. Gradients in some of the rural sections of the trail can be difficult for manual wheelchairs and buggies.

These include:

- A short section between Hednesford Park (along the former railway line) and Rugeley Road (A460).
- A short section near the concrete standing area adjacent to Brindley Heath Road.
- A short section between Cannock Chase Visitor Centre and Cannock Chase Forest Centre.

The trail passes close to wildlife sites of international importance. Cycle wheels, horse hooves, and feet, can severely damage these sites, and out of control dogs disturb wildlife. Please help us to protect wildlife by remaining on designated routes and by keeping dogs under close control.

Remember to follow the Cannock Chase Code.



Scan the QR code to download a map of the Cannock Chase Heritage Trail