

Let's work together to create a park and play area the whole community can enjoy!

Cannock Park AND PLAY AREA



Your park,
your ideas

For more information, contact **Lynn Evans**
tel 07855 099353 or visit www.cannockchasedc.gov.uk/newparks

www.cannockchasedc.gov.uk | Search for 'Cannock Chase Life' | @CannockChaseDC | @CannockChaseDC

Your new Play Area is coming soon...

We need your feedback!

In December 2023, Cannock Chase Council's Cabinet approved a significant investment of £465,000 to redevelop the play areas and open spaces at Cannock Park. This funding forms part of the Council's 2024/25 capital programme, financed by:

- £250,000 from Section 106 monies
- £200,000 from CIL monies
- £15,000 grant from the Forest of Mercia

An additional £220,000 has been secured from the Safer Streets 5 Fund, which has already funded the installation of new CCTV cameras and lighting to improve safety and accessibility across the site. This brings the total redevelopment budget to an impressive £685,000.

Why this matters...

Outdoor spaces play a vital role in supporting healthy and active lifestyles. The Council is committed to creating high-quality parks, play areas and open spaces that everyone can enjoy.

Cannock Park currently boasts a wide range of facilities, including a golf course, leisure centre, football pitches, a rose garden, skate park, tennis courts and pavilions. The play area itself features 21 pieces of equipment, with some dating back to 1996.

Work is set to be completed by early 2025.

We want your views!

Dates for your diary...

Help shape the future of your park by joining our engagement days and completing a short survey.

Our team will be on-site to share plans, answer questions, and gather your feedback:

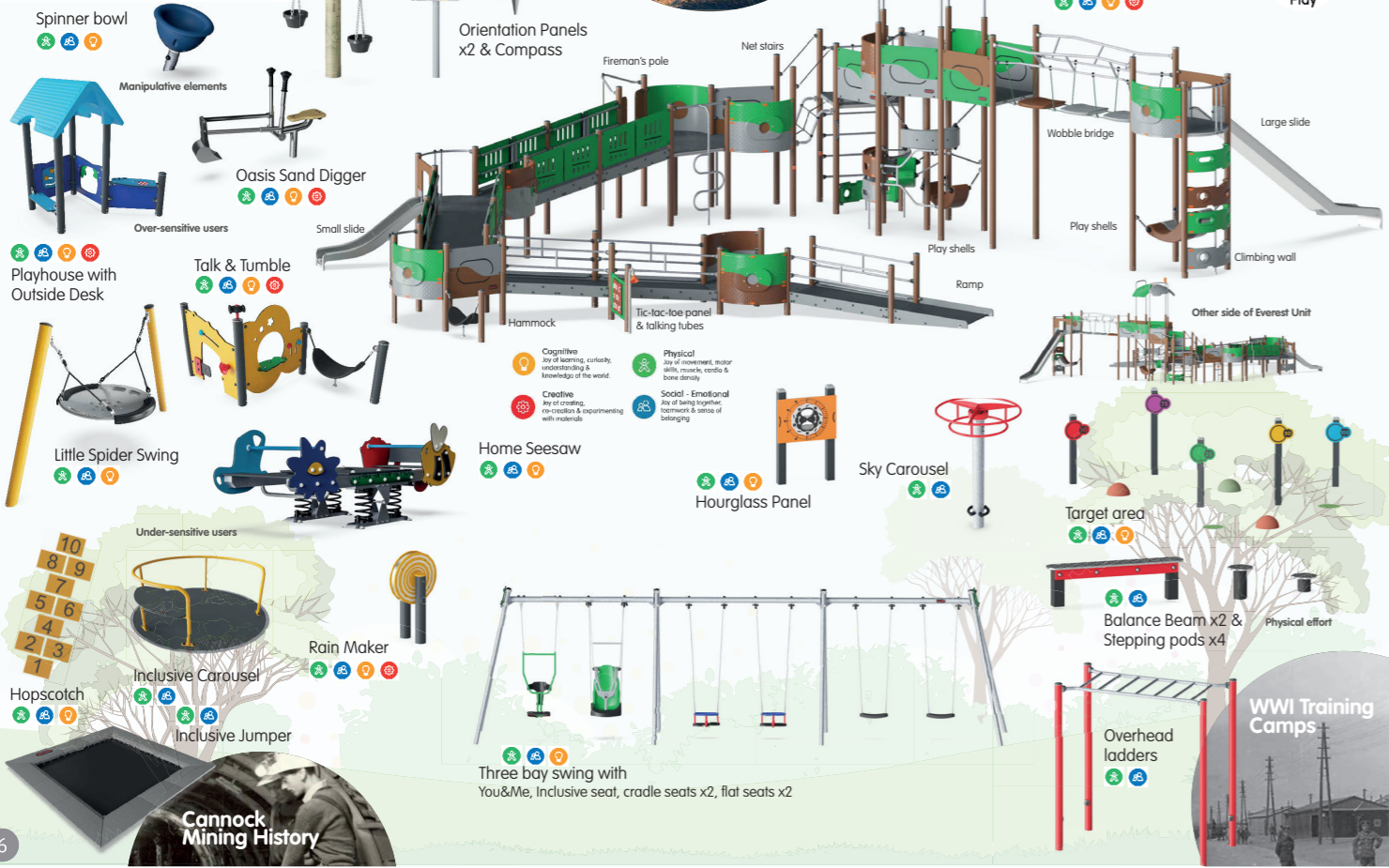
Tuesday, 18 February
10.30am - 12.30pm

Saturday, 22 February
11am - 4pm



Play Equipment

Equality in play



Phased redevelopment...

Given the scale of the project, the redevelopment will be delivered in two phases. The first phase will include:

- Replacement of the existing junior play area and installation of a new toddler play area.
- Resurfacing and extending footpaths from Park Road to Shoal Hill Common and Cardinal Griffin Catholic School, including new lighting in some areas.
- Drainage improvements to the brook, with updated grilles and gates.
- Enhancements to site access and boundaries, including new CCTV cameras, lighting, and hedgehog-friendly fencing.
- Improvements to the rose garden.
- New street furniture throughout the site, including display boards, benches, and bins.

We are excited to share the design of the new play area with you and would love to hear your thoughts before development begins.



Please take a moment to complete our short survey at www.cannockchasedc.gov.uk/newparks

or scan the QR code below:



The deadline for feedback is **Sunday 9 March 2025.**

Cannock Park

Cannock Chase Council



- 200 PLUS USERS
- 60 PLUS PLAY FEATURES
- AGE 1-14 RANGE



Our design at Cannock Park ensures that users of all ages and abilities can play together!

Play Equipment

Equality in play

Cannock Mining History

We have designed a sandpit with ramp to allow all users to develop their sensory stimulation and creativity.

Cannock Chase Birch Forest

Bespoke Multi unit with climbing play & ramp that offers varied opportunities for fun for all.

Accessible Low-level play

An area with non-transferable equipment for wheelchairs and sensitive users.

Accessible & Inclusive playground design



Read more about inclusive playgrounds with KOMPAN'S Play Institute Whitepaper on Play for all equipment

Get Around

Accessible path to with featured entrance. Internal coloured wet pour path to guide users around equipment.

Stay

Colour codes zones areas per activity & themes.

Play

Varied play options with marked functionalities.

Swinging

Trains spatial awareness as well as the sense of balance. Different type of seating and lying options with friends and carers.

WWI Training Camps

A physical challenge. Thrilling & physical elements are located within the main entrance to reduce the distance to the fun parts for less able users.

