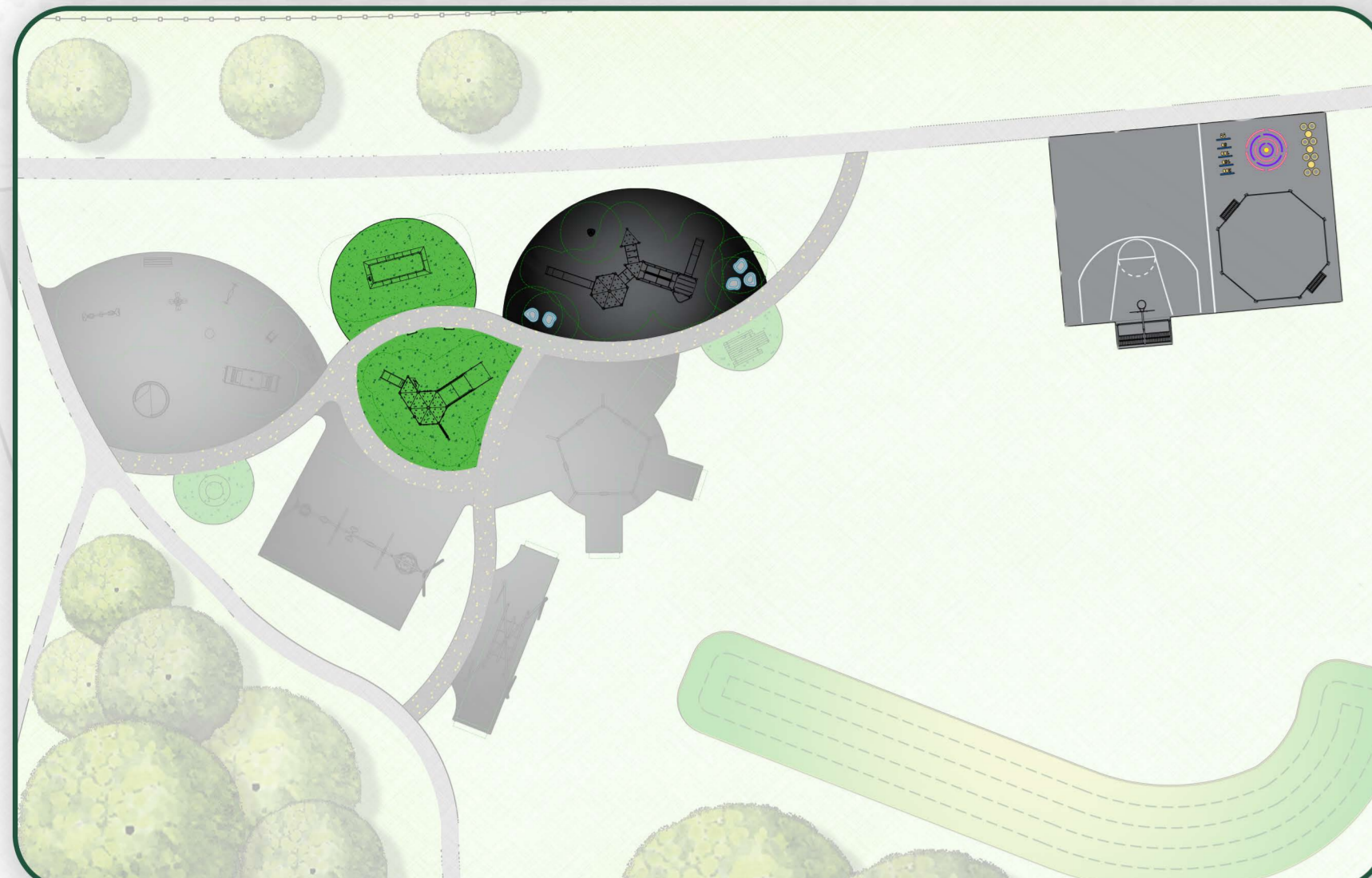
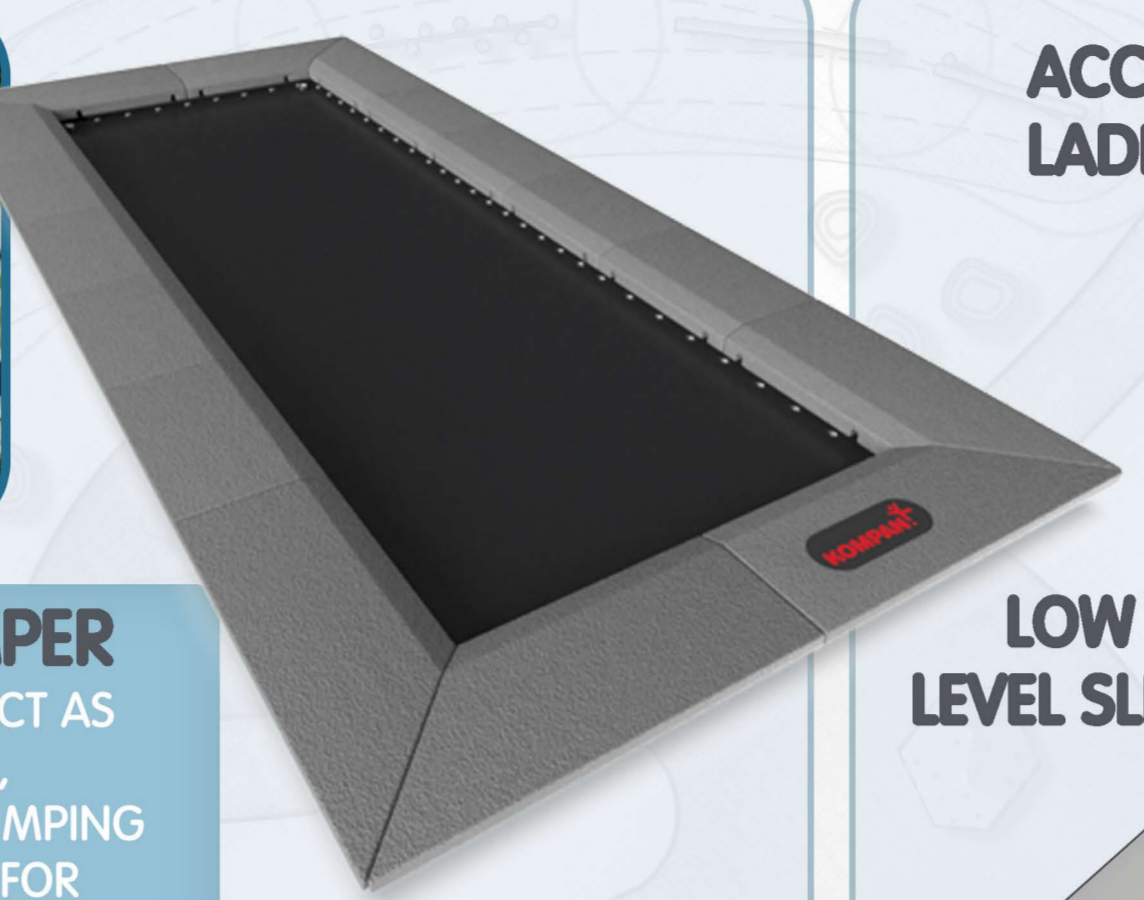


Zone 3 - Sensory, Zone 4 - Climbing & Zone 5 - Sports

A MULTI-PLAY UNIT FOR ALL AGES AND ABILITIES TO ENJOY TOGETHER!
 OUR MULTI-UNITS ARE LOADED WITH PHYSICAL, SOCIAL AND IMAGINATIVE PLAY ACTIVITIES FROM TOP TO BOTTOM, INSIDE AND OUT. THE PHYSICAL ACTIVITIES RANGE FROM BUBBLE WINDOWS, SLIDES AT VARIOUS HEIGHTS, TACTILE LOW LEVEL PLAY, MULTIPLE BRIDGES AND CLIMBING FEATURES, ... WHERE WILL YOU START?



IN-GROUND JUMPER
 THE JUMPER MAKES PERFECT AS PLAYGROUND "GLUE", CONNECTING ACTIVITIES. JUMPING IS A FANTASTIC ACTIVITY FOR MOTOR SKILLS SUCH AS BALANCE, PROPRIOCEPTION AND RHYTHM.

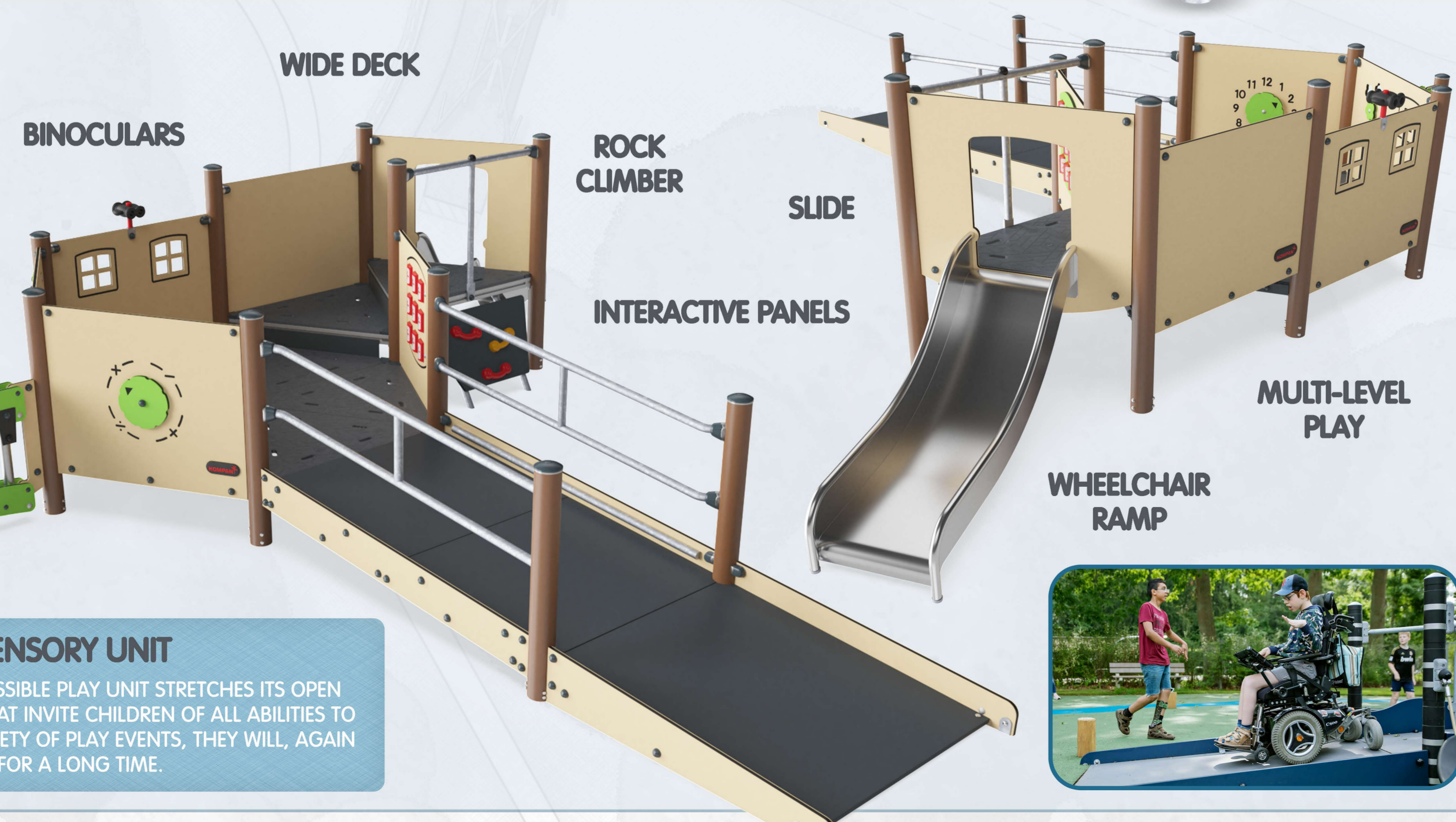
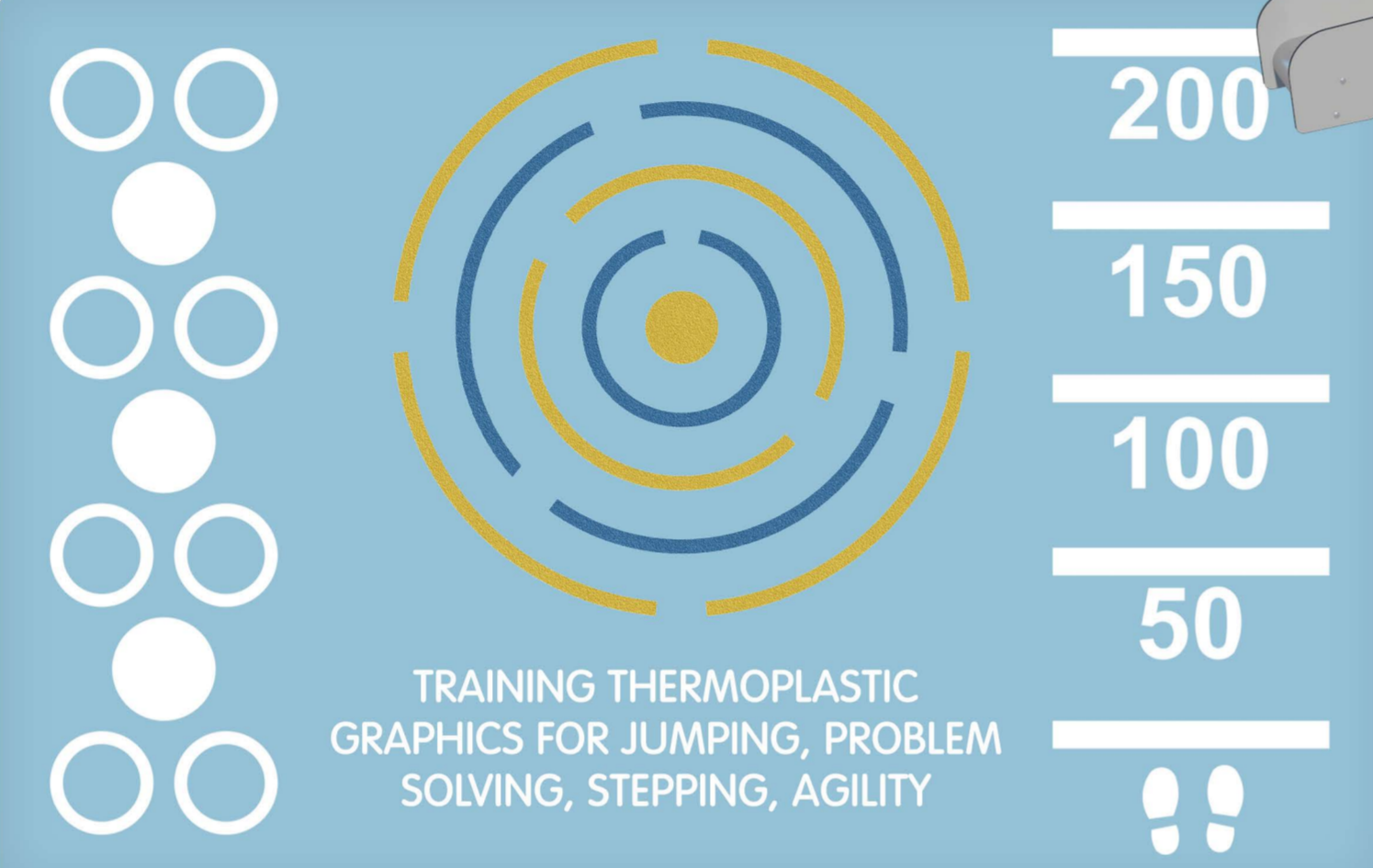


HAND HOLDS ON PLATFORM AND STEPS



playground	what	where	who	bathroom	fast	slow
I	with	you/your	they/their	it	off	open
climb	play	run	walk	stand	sit	push
hungry	thirsty	line up	help	give	make	stop
like	happy	sad	bored	cool	hot	sick
yes	no/not	up	down	turn	in	out
✓	✗	↑	↓	↻	↪	↩

INTERACTIVE PLAY PANELS
 PLAY PANELS CAN HELP DIRECT A CHILD'S LEARNING TOWARDS PARTICULAR SUBJECTS. ADULTS CAN ALSO PARTICIPATE IN PLAY AND GUIDE CHILDREN TOWARDS NEW DISCOVERIES. SENSORY PANELS CAN ALSO BE ADDED TO IMPROVE INCLUSIVITY IN ANY PLAYGROUND



ACCESSIBLE SENSORY UNIT
 THIS GREAT FULLY WHEELCHAIR ACCESSIBLE PLAY UNIT STRETCHES ITS OPEN ARMS OUT CREATING FOUR SPACES THAT INVITE CHILDREN OF ALL ABILITIES TO COME PLAY. THANKS TO THE RICH VARIETY OF PLAY EVENTS, THEY WILL, AGAIN AND AGAIN AND FOR A LONG TIME.



MULTI GOAL & PANNA MUGA
 THE DISTANCE BETWEEN THE VERTICAL TUBES IS SMALL ENOUGH TO KEEP SMALL BALLS, SUCH AS FIELD HOCKEY BALLS, INSIDE THE PITCH AT ALL TIMES. BY EMBEDDING THE TUBES INTO THE STEEL FRAME WE HAVE CREATED AN EXTREMELY VANDALISM PROOF STRUCTURE THAT CAN BE PLACED IN ANY COMMUNITY. THIS TRANSPARENT DESIGN MAKES IT EASY TO FOLLOW THE GAME FOR SPECTATORS. THE 3 M X 2 M MULTI GOAL FOLLOWS THE GOAL SIZE OF FIFA FUTSAL AND IHF HANDBALL REGULATIONS. THE BASKETBALL HOOP IS PLACED AT THE OFFICIAL NBA HEIGHT OF 305 CM, AND HAS THE OFFICIAL NBA SIZE OF 46 CM IN DIAMETER